



A Closed & Insulated Crawlspace is the Foundation of a Healthy Home.



NISUS®

Customers Want a Crawlspace

1. That is Sanitized

Crawlspaces can be breeding grounds for bacteria, viruses and fungus. Before you begin work in a crawlspace, sanitize with **Nisus DSV™** concentrate. Only 3 oz. of DSV per gallon of water makes 131 fluid oz. of solution that will kill hundreds of viruses and bacteria. Spray feces, sewage, fungus, nesting materials and any other dangerous debris. Area should remain wet for 10 minutes to disinfect. See label for proper dilution rates and use.

2. Looks Clean

In many cases, surface fungus has discolored floor joists in the crawl. Use **Mold-Clean®** to remove these stains. Apply the product, allow it to remain wet for 10 minutes, then simply let dry. Stubborn stains may require brushing while wet. **Mold-Clean** also preps the wood for Bora-Care applications.

3. Is Protected from Wood Destroying Organisms

The **Bora-Care®** family of products protects the wood in your crawl from termites, carpenter ants, wood boring beetles and decay fungi (wood rot). Apply **Bora-Care** as a 1:1 application to a concrete block or concrete walls and in a two-foot band to all wood anywhere the house touches the foundation. Treat the rest of the wood with a 5:1 application of **Bora-Care with Mold-Care®**.

4. Smells Clean

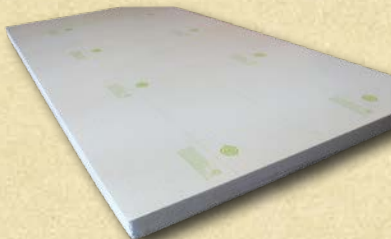
Bac-Azap® encapsulates odor molecules and then goes to work actually consuming the organic matter that is the source of the odor. Apply **Bac-Azap** to the entire crawlspace before you lay down the poly.

5. Is Free from Pests

Broadcast-spread **Niban®** granular bait throughout the crawlspace as the last step before laying the poly. **Niban** will kill any ants, cockroaches, crickets, silverfish, slugs, or snails that still access the space. The active ingredient in **Niban** is a borate mineral salt and does not break down over time, giving you great long-term protection.

6. Is Insulated

Bora-Foam® is a termite-resistant R-10 foam insulation board designed specifically for use in crawlspaces. **Bora-Foam** attaches to the block and provides both insulation and a vapor barrier, allowing you to attach the poly to the foam instead of running it all the way up the block wall. **Bora-Foam** is puncture resistant, won't cut your hands like foil products, doesn't itch like fiberglass and allows you to make a three-quarter cut and snap to make an inspection flap.



Protect your home



Protect your family



Protect the environment

Creating a Closed Crawlspace



1. Disinfect the Crawlspace

Spray all surfaces in the crawlspace with **Nisus DSV** to kill harmful bacteria and viruses that may exist in crawlspaces, including hantavirus and e-coli.



2. Clean Surface Stains on Wood

Remove all the old fiberglass insulation and rake out all debris. Apply **Mold-Clean** to all wood floor joists, beams and any other surface that is stained. **Mold-Clean** will eliminate the stains and prepare the wood for a **Bora-Care with Mold-Care** application.



3. Protect Wood from Termites, Carpenter Ants and Wood Boring Beetles

Apply **Bora-Care** as a 1:1 solution to all wood that comes into contact with the foundation, 2 feet out on all floor joists, beams and piers. Married joists and beams require 2 applications 20 minutes apart. Spray concrete block 2 feet up from the ground.



4. Protect Wood from Decay Fungi

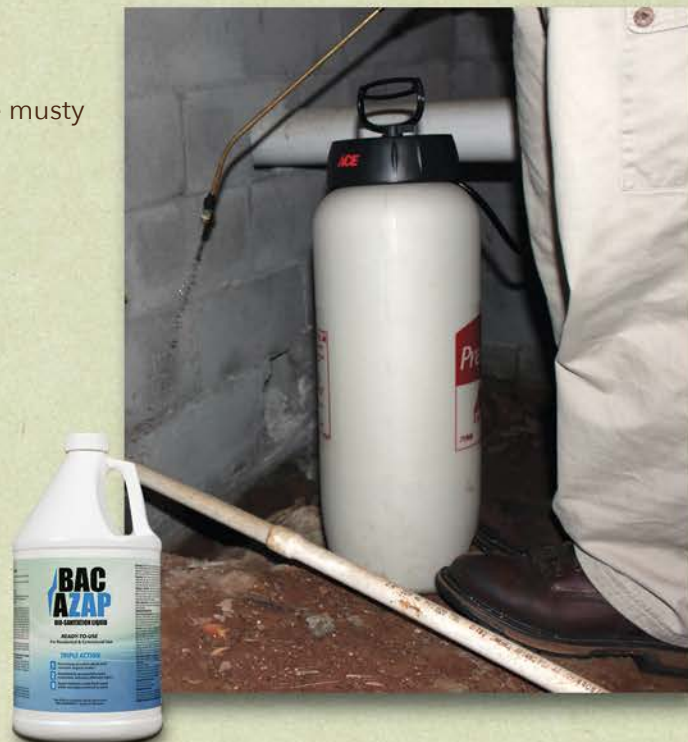


Apply **Bora-Care with Mold-Care** to the rest of the wood in the crawlspace. Spray all floor joists and beams. **Bora-Care with Mold-Care** will kill existing decay fungi and mold, and help prevent it from growing back.



5. Eliminate Musty Odors

Apply **Bac-Azap** to the entire crawlspace to eliminate musty odors or any odors from rodents or other pests.





6. Eliminate Pests

Before you put down any poly, broadcast spread **Niban** throughout the crawlspace. **Niban** will provide protection from ants, cockroaches, crickets, silverfish, slugs and snails, and other listed pests.

7. Install Dehumidifier

In normal moisture situations, install the dehumidifier just before you lay the poly. In very wet situations, however, go early and install it about a week before you start the job. This will allow the space to dry out and create a better working environment.



8. Apply the Poly



Lay 8 mil poly to create a vapor barrier that locks out moisture and rising damp. Attach the poly 1 foot up the crawlspace walls. Create poly wraps for all piers.



9. Attach Bora-Foam Insulation

Attach the **Bora-Foam** insulation boards to the exterior concrete walls using concrete fasteners or double-stick butyl tape. Cut and snap boards to create an inspection flap or leave a gap for inspection as indicated by code.





Before



After

For additional proven products
for your crawlspace, visit **www.
CrawlspaceDepot.com**



NISUS®

100 Nisus Drive • Rockford, TN 37921
800.264.0870 • www.nisuscorp.com

Always read, understand and follow the label, SDS and regulations.
Bac-Azap, Bora-Care, Bora-Foam, Mold-Clean, Mold-Care, Niban, Nisus DSV and Nisus are trademarks or
registered trademarks of Nisus Corporation. ©2023 Nisus Corporation #CSHH-0323