

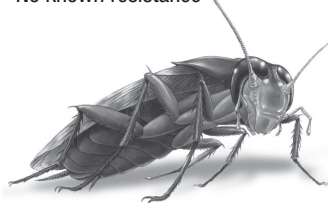
niban®

GRANULAR BAIT-C

Insecticide

For the control of ants,
cockroaches and mole crickets.

- Broad spectrum bait
- Kills the queen to control the entire ant colony
- Weatherized granule
- Lasts through 7.5 cm of rain
- Virtually no odour
- No known resistance



**COMMERCIAL
ATTENTION –
IRRITANT POUR LES YEUX**

GARANTIE : Acide borique..... 5,0%
Avertissement, contient
l'allergène œuf.

**LIRE L'ÉTIQUETTE AVANT
L'UTILISATION**

**TENIR HORS DE
LA PORTÉE DES
ENFANTS**

**No D'HOMOLOGATION 26565 LOI SUR
LES PRODUITS ANTIPARASITAIRES**

NISUS CORPORATION
100 Nisus Drive, Rockford (TN) 37853
ÉTATS-UNIS • 865-577-6119

**COMMERCIAL
CAUTION – EYE IRRITANT**

GUARANTEE: Boric Acid 5.0%
Warning, contains the allergen egg.

**READ THE LABEL BEFORE
USING**

**KEEP OUT OF
REACH OF
CHILDREN**

**REGISTRATION NO. 26565 PEST
CONTROL PRODUCTS ACT**

NISUS CORPORATION
100 Nisus Drive, Rockford, TN
37853 U.S.A. • (865) 577-6119



niban®

APPÂT GRANULEUX C

Insecticide

**Pour contrôler les fourmis, les
blattes et les courtilières.**

- Un appât à large spectre d'efficacité
- Tue la reine pour contrôler toute la colonie de fourmis
- Est un granule intempérisé
- Efficace jusqu'à 7,5 cm de pluie
- Pratiquement aucune odeur
- Aucune résistance connue

 **NISUS®**

NIBAN GRANULAR BAIT C

Insecticide

For the Control of Ants, Cockroaches and Mole Crickets

For applications in homes, apartments, garages, public and private institutions, schools, hotels, hospitals, pet stores, zoos, kennels, warehouses, supermarkets, restaurants, vending machines, food processing plants and transportation vehicles.

For outdoor use around building foundations and under porches to control ants and mole crickets.

NIBAN Granular Bait C is a ready-to-use bait for the control of ants, cockroaches and mole crickets in homes, apartments, garages, public and private institutions, schools, hotels, hospitals, pet stores, zoos, kennels, warehouses, supermarkets, restaurants, vending machines, food processing plants and transportation vehicles. For outdoor use around building foundations and under porches to control ants and mole crickets.

DIRECTIONS FOR USE

General Information

APPLY/USE PRODUCT ONLY IN AREAS INACCESSIBLE TO CHILDREN AND PETS. DO NOT APPLY AS A BROADCAST APPLICATION. To kill listed insect pests in food handling establishments, homes, restaurants, markets, schools, warehouses, factories, offices, hotels, motels, hospitals, nursing homes, garages, grocery stores, apartment buildings, new construction, industrial plants, theatres, ships, boats, trains, trucks, yachts, mobile homes, buses, pet stores, zoos, kennels, military bases, libraries, utilities and sewers. This product is designed to be used as a residual treatment in an Integrated Pest Management program incorporating good sanitation practices.

Do not contaminate this product with other pesticides. If this product becomes contaminated with another pesticide it will lose its effectiveness. Do not apply to food. Cover or remove any food during application. In food handling and other areas, bait may be placed in removable trays in areas accessible to insects but away from children and pets.

Treated baits must be placed in locations NOT accessible to children, pets, livestock or wildlife OR in tamper-resistant bait stations.

Tamper-resistant bait stations must:

- be constructed of high-strength material that is hard for children or

- animals to destroy;
- be constructed so that the bait cannot be shaken out;
- have an entrance which prevents children and non-target animals from reaching bait;
- have an access panel which fastens securely and locks;
- be able to be securely fastened to a surface;
- be clearly labelled: DANGER POISON.

This product may be applied in appropriate areas with most types of dust applicators. Consult equipment manufacturer for recommended settings. Do not treat pets with this product. Avoid contamination of feed and foodstuff. Avoid over-application around ornamental plants and fish ponds. Do not apply this product in combination with fertilizers, other pesticides or other biologically-active materials.

This product is ready-to-use, weather/moisture resistant bait that controls and kills ants, cockroaches and mole crickets including:

Ants: Argentine, Thief, Pharaoh, Little Black, Pavement, Odorous House and Crazy Ants

Cockroaches: Asian, American, Brown, Brown Banded, Smokey Brown, German and Oriental Cockroaches

Crickets: Mole Crickets

Exterior Baiting to Control and Kill Ants Around Homes and Other Structures

Treat exterior perimeter areas of structure in a band 0.6 to 1.2 metres wide at a rate of 1 to 2 kg per 100 square metres. Apply along ant trails and in areas where ant activity has been noted.

To Control and Kill Ants, Cockroaches and Mole Crickets in the Interior of Homes, Hotels, Apartment Buildings, Stores and Restaurants (Non-Food Areas), Warehouses and Sewers

General treatment: Use a mechanical spreader or applicator suitable for granular products to apply at a rate of 1 to 2.0 kg per 100 square meters of surface area, out of the reach of children and pets. Spread evenly in crawl spaces, attics, drop ceilings, and cellars with dirt or gravel floors. In attics, be sure to apply in eaves and access drains. In warehouses, garages and basements, concentrate application along walls and baseboards. Concentrate application in areas where insect activity is greatest. Bait may be placed in removable trays in areas accessible to insects but away from children and pets. Always record the location and number of bait stations. In sewers, apply along ledges and around manhole entrances. Reapply as necessary.

This product may also be applied in inaccessible areas such as cracks and crevices where insects may hide. Apply in pits of elevator, dumbwaiter and trash chute shafts. Apply under and behind pallets and boxes in storerooms.

For treating new construction

Apply in wall voids and other areas where listed insects may hide.

For perimeter treatments

Spread bait at a rate of 1 to 2kg per 100 square metres in a band at least 0.6 metres wide around foundations, patios, driveways, sidewalks, entrances to homes and buildings, or other areas where listed insects are present. Apply around landscape lighting, floodlights, street lamps or other exterior fixtures and scatter bait in flower beds, leaf litter, wood piles, trash cans and refuse areas. Reapply as necessary.

For treating ant mounds

Apply 1 to 2 kg per 100 square metres of this product around all ant mounds. Supplement by broadcast application in immediate area and along ant trails and in areas where ant activity has been noted.

To Control and Kill Ants, Cockroaches and Mole Crickets

In food handling establishments, homes, restaurants, markets, schools, warehouses, factories, offices, hotels, motels, hospitals, nursing homes, garages, grocery stores, apartment buildings, new construction, industrial plants, theaters, ships, boats, trains, aircraft, trucks, yachts, mobile homes, buses, pet stores, zoos, kennels, military bases, libraries, utilities and sewers:

Food area application limited to crack and crevice treatment only (see following section). Apply only in areas inaccessible to children and pets. Avoid contamination of feed and foodstuffs. Apply liberally, scattering/dusting under and behind refrigerator, cooler, stove, sink, dishwasher, washing machine and dryer tubs; counters; into openings around drains, water pipes and electrical conduits; and in cracks and crevices along baseboards and corners of cabinets, counter tops, cupboards and closets. Remove all lower drawers in kitchen and bathroom cabinets, bedroom dressers and chests of drawers, and then scatter/dust liberally in drawer wells. Any bait visible after application must be brushed into cracks and crevices or removed. Bait may be placed in removable trays in areas accessible to insects but away from children and pets. A food handling establishment is any place where food is held, processed, prepared or served. Food areas include areas for receiving, preparing, serving, packaging and storing food. Apply

only when these areas are not in operation, and only as a crack and crevice treatment. Cover or remove food commodities, food processing equipment, packaging materials and utensils before application. Thoroughly clean all surfaces that may contact food and rinse with potable water before reuse.

Crack and Crevice Treatment

Apply in inaccessible areas such as cracks and crevices where insects may hide. Crack and crevice applications may be made using most types of dust applicators. A bellows type duster works best. Insert into gaps, cracks and crevices and apply depending upon the severity of the infestation. Drill small holes to gain access into wall voids and under cabinets. This product may also be applied in appropriate areas with a power duster. Consult equipment manufacturer for recommended settings. Apply Niban Granular Bait C under and behind refrigerators and other appliances, sinks, counters; into openings around drains, water pipes and electrical conduits; and in cracks and crevices along baseboards and corners of cabinets, cupboards and closets. Remove all lower drawers in kitchen and bathroom cabinets, bedroom dressers and chests of drawers, and then carefully apply Niban Granular Bait C in drawer wells. Apply only in areas inaccessible to children and pets. Avoid contamination of feed and foodstuffs, utensils and food preparation areas. Any bait visible after application must be brushed into cracks and crevices or removed. Reapply as necessary.

PRECAUTIONS:

KEEP OUT OF REACH OF CHILDREN AND PETS. Harmful if swallowed. May irritate eyes. Avoid contact with eyes, skin or clothing. Wear long pants, long-sleeved shirt, chemical-resistant coveralls, dust mask, protective eyewear and chemical-resistant gloves when loading and applying boron. Wash hands after use.

FIRST AID:

If swallowed: Call a poison control centre or doctor immediately for treatment advice. Have person sip a glass of water if able to swallow. Do not induce vomiting unless told to do so by a poison control centre or doctor. Do not give anything by mouth to an unconscious person.

If on skin or clothing: Take off contaminated clothing. Rinse skin immediately with plenty of water for 15–20 minutes. Call a poison control centre or doctor for treatment advice.

If inhaled: Move person to fresh air. If person is not breathing, call 911 or an ambulance, then give artificial respiration, preferably by mouth-to-mouth, if possible. Call a poison control centre or doctor for further

treatment advice.

If in eyes: Hold eye open and rinse slowly and gently with water for 15–20 minutes. Remove contact lenses, if present, after the first 5 minutes, then continue rinsing eye. Call a poison control centre or doctor for treatment advice.

Take container, label or product name and Pest Control Product Registration Number with you when seeking medical attention.

TOXICOLOGICAL INFORMATION:

Treat symptomatically.

STORAGE:

Store bait in original, tightly sealed container. Store in a cool, dry place. Do not contaminate water, food or feed by storage or disposal.

DISPOSAL:

1. Thoroughly empty the contents of the container into the application device.
2. Follow provincial instruction for any required additional cleaning of the container prior to its disposal.
3. Make the empty container unsuitable for further use.
4. Dispose of the container in accordance with provincial requirements.
5. For information on disposal of unused, unwanted product contact the manufacturer or the provincial regulatory agency. Contact the manufacturer and the provincial regulatory agency in case of a spill, and for cleanup of spills.

NOTICE TO USER:

This control product is to be used only in accordance with the directions on the label. It is an offence under the Pest Control Products Act to use this product in a way that is inconsistent with the directions on the label. The user assumes the risk to persons or property that arises from any such use of this product.